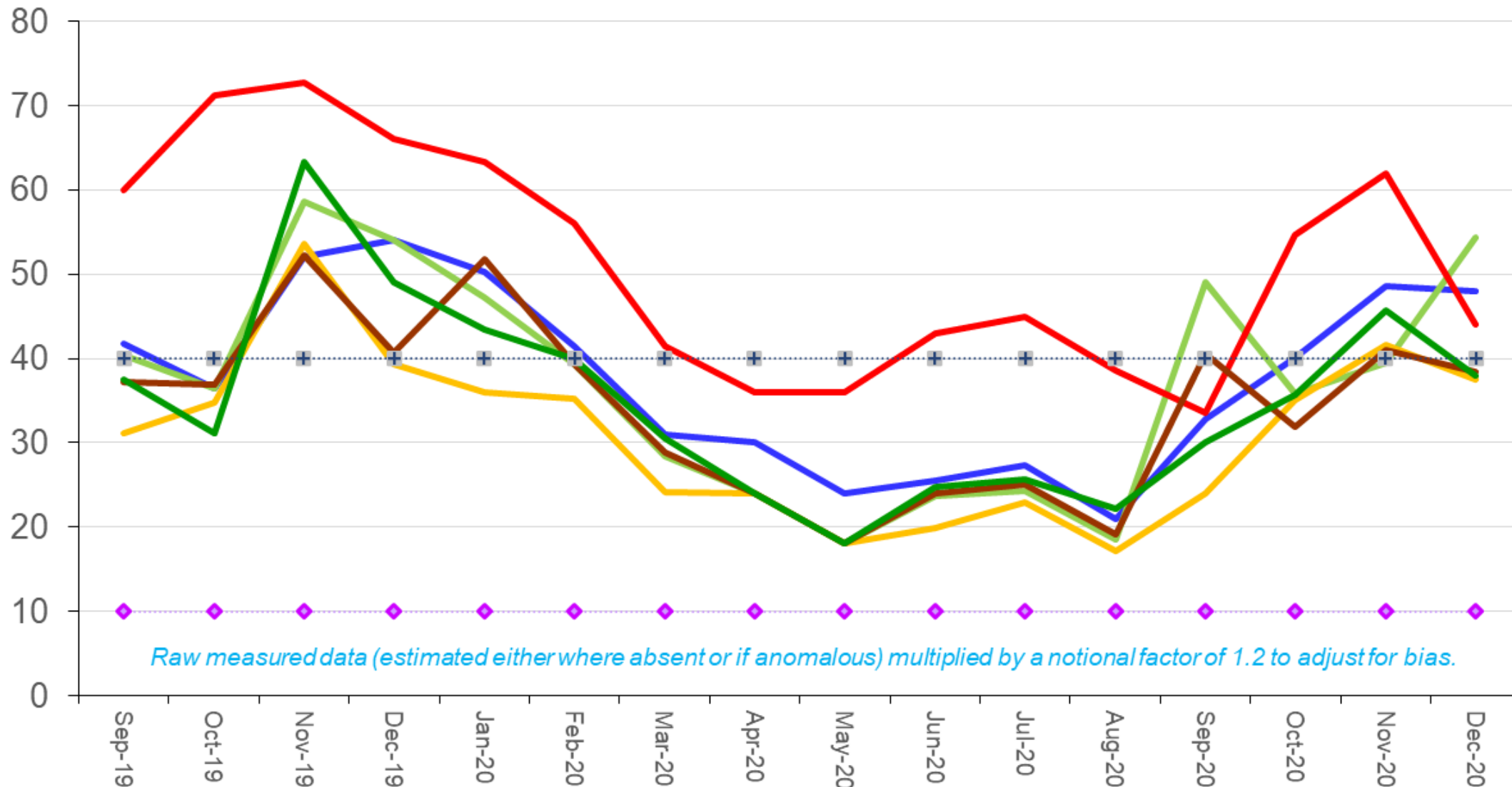


Abbey Road ward

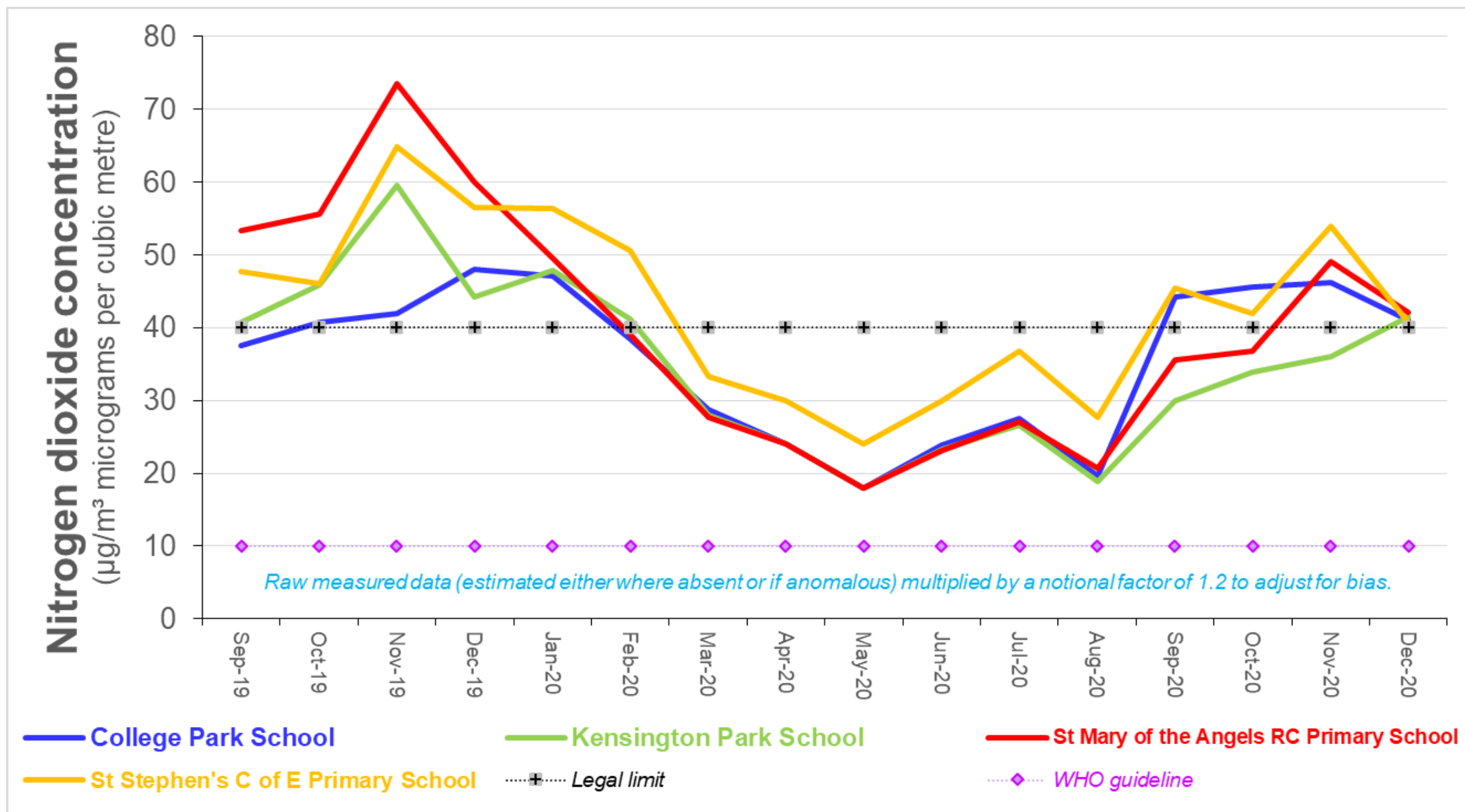
Nitrogen dioxide concentration
($\mu\text{g}/\text{m}^3$ micrograms per cubic metre)



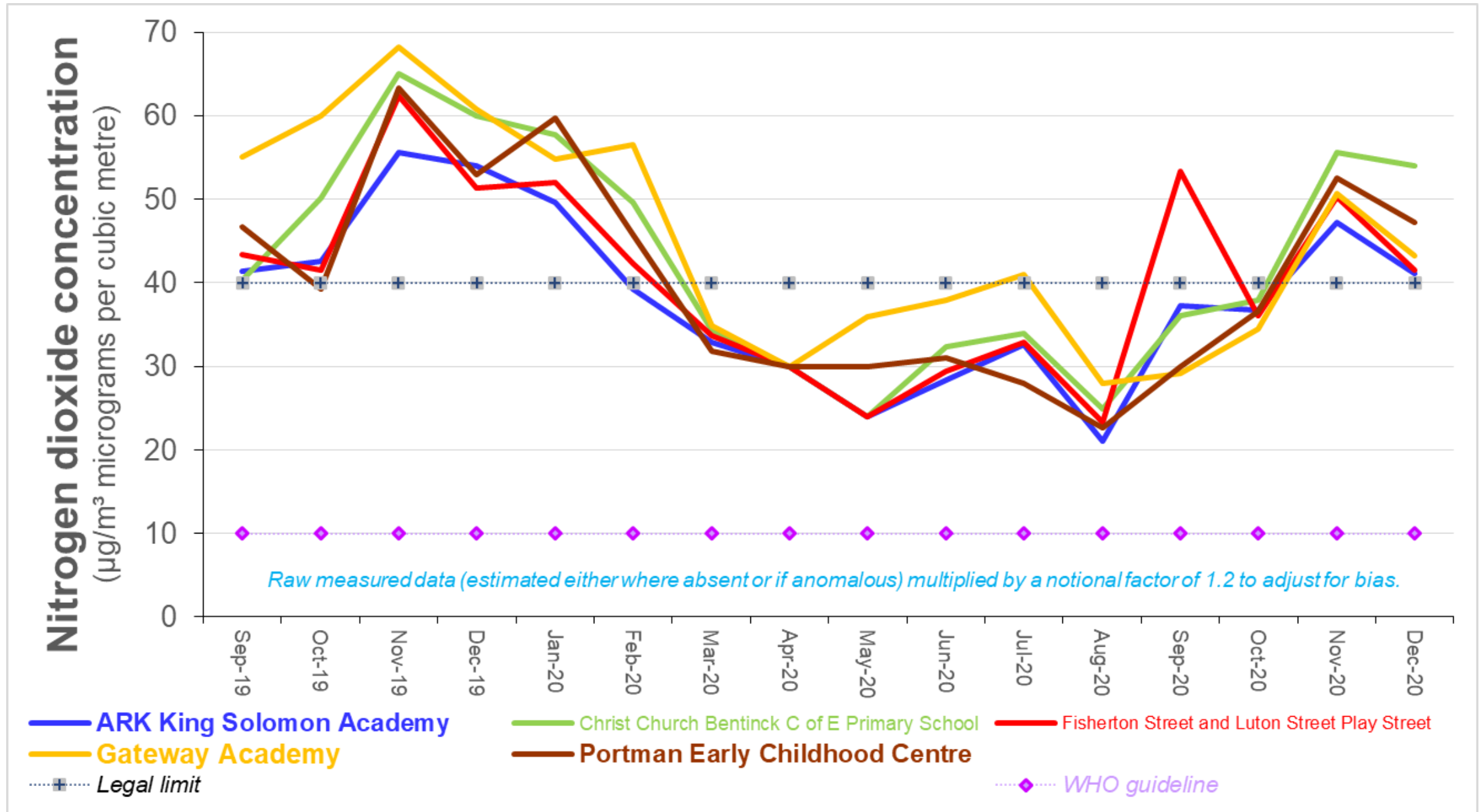
Raw measured data (estimated either where absent or if anomalous) multiplied by a notional factor of 1.2 to adjust for bias.



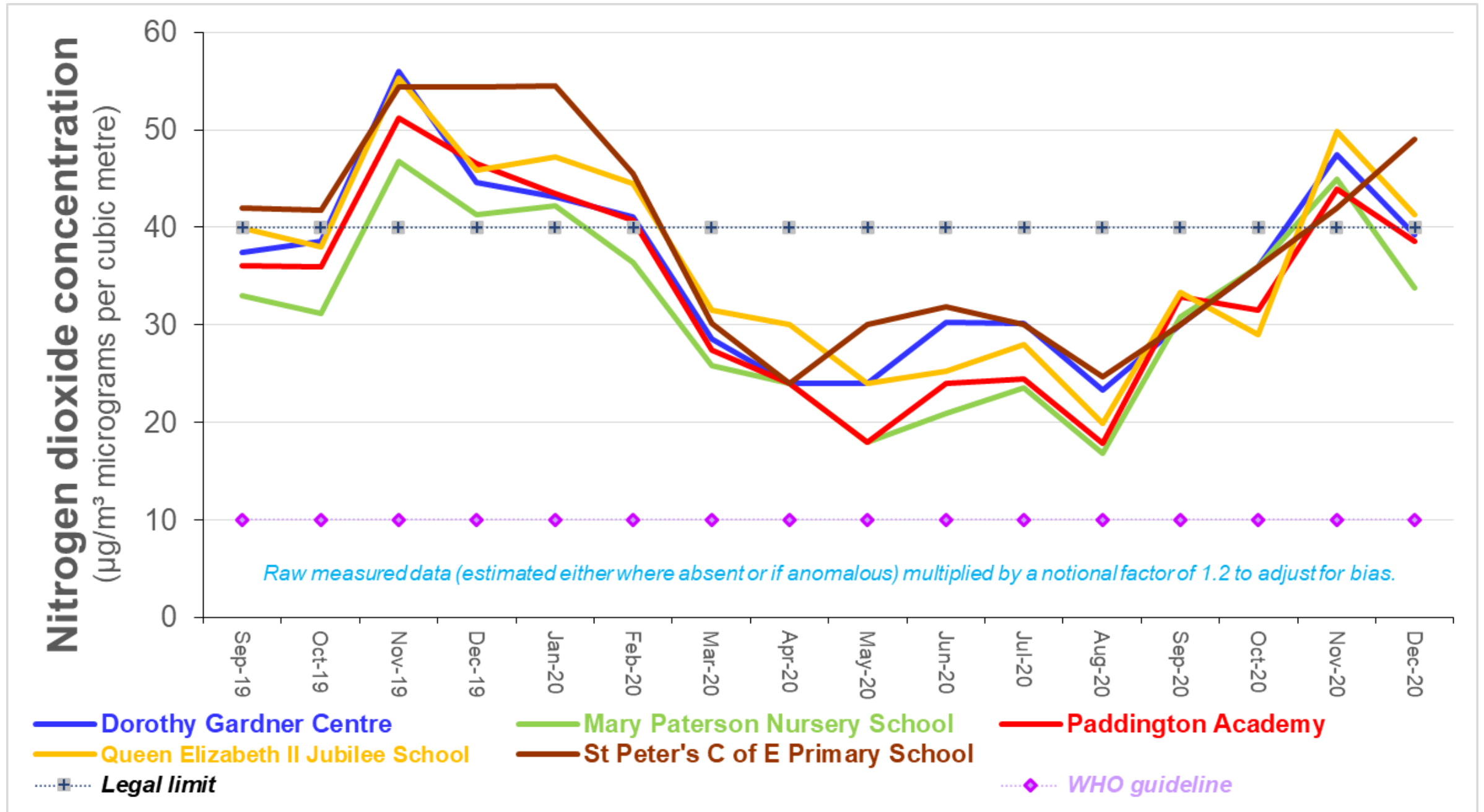
Bayswater ward



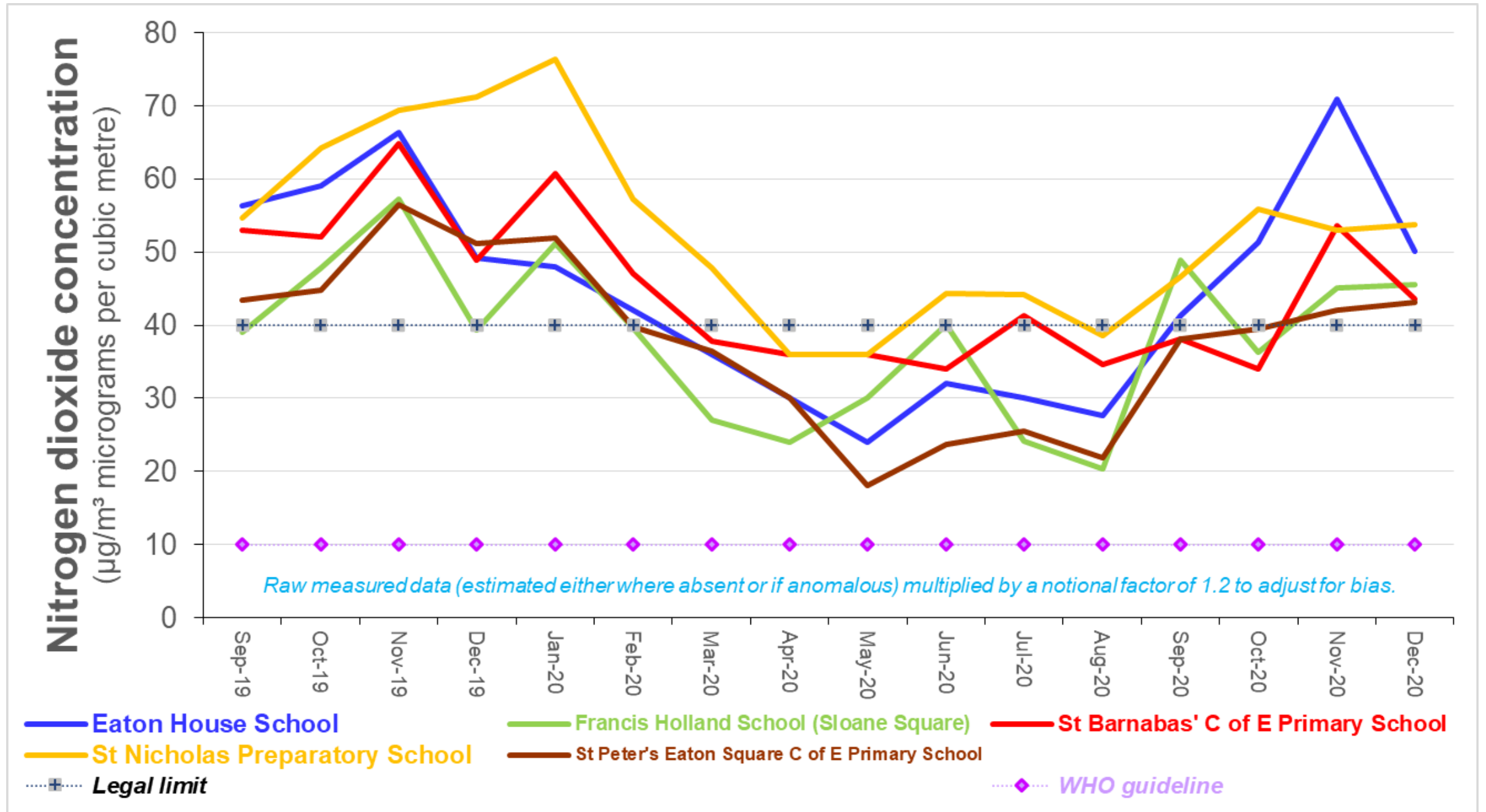
Church Street ward



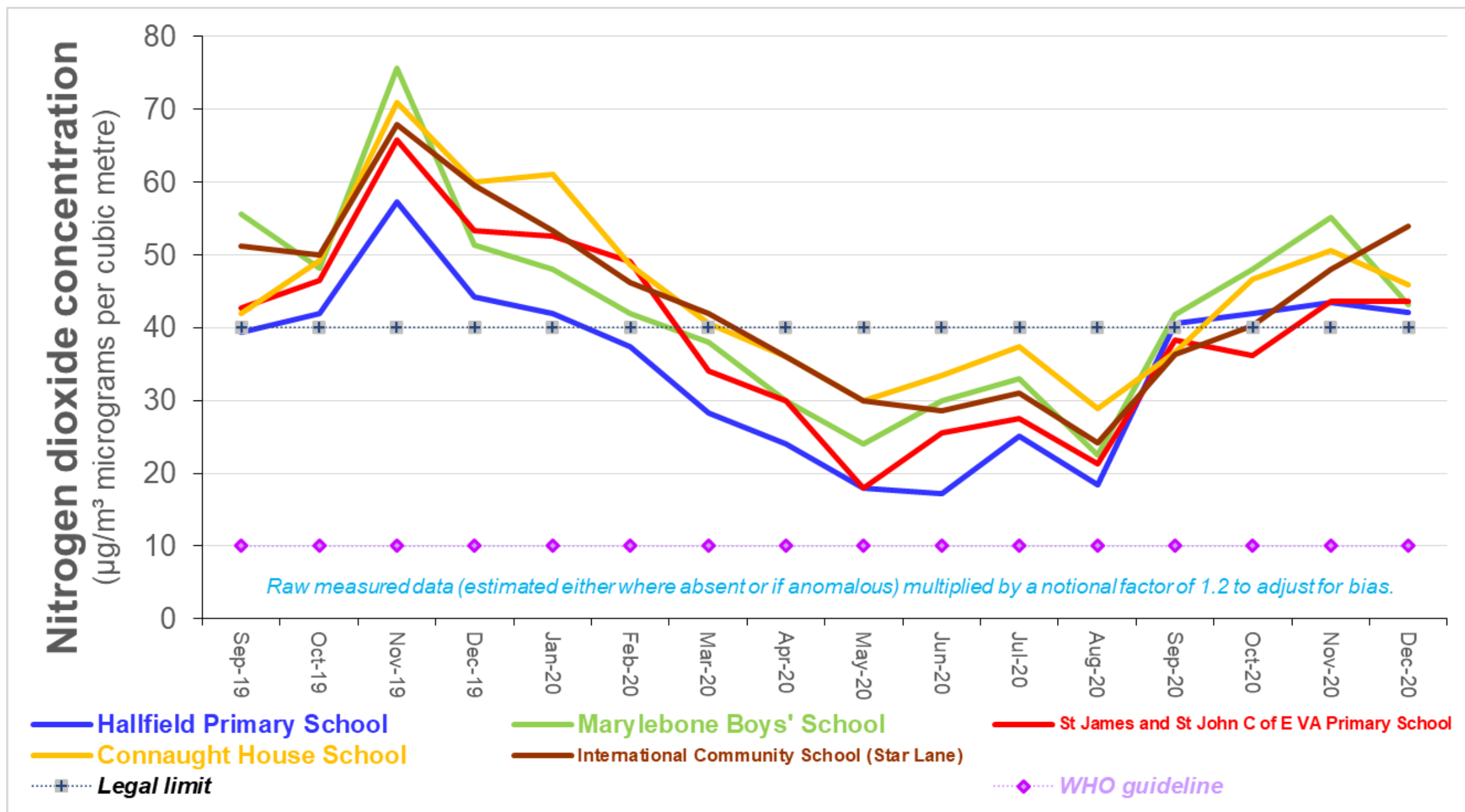
Harrow Road ward



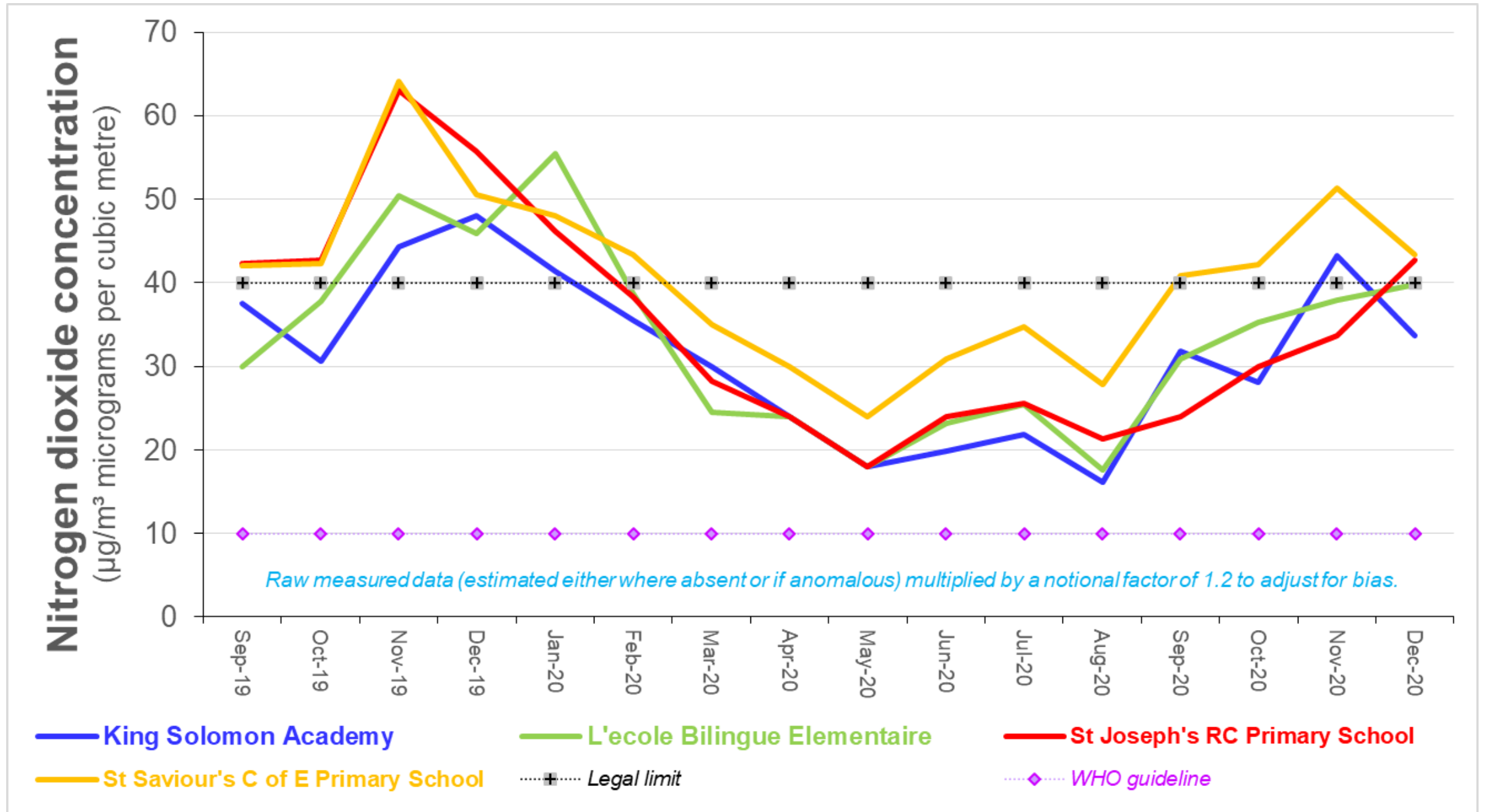
Kensington and Belgrave ward



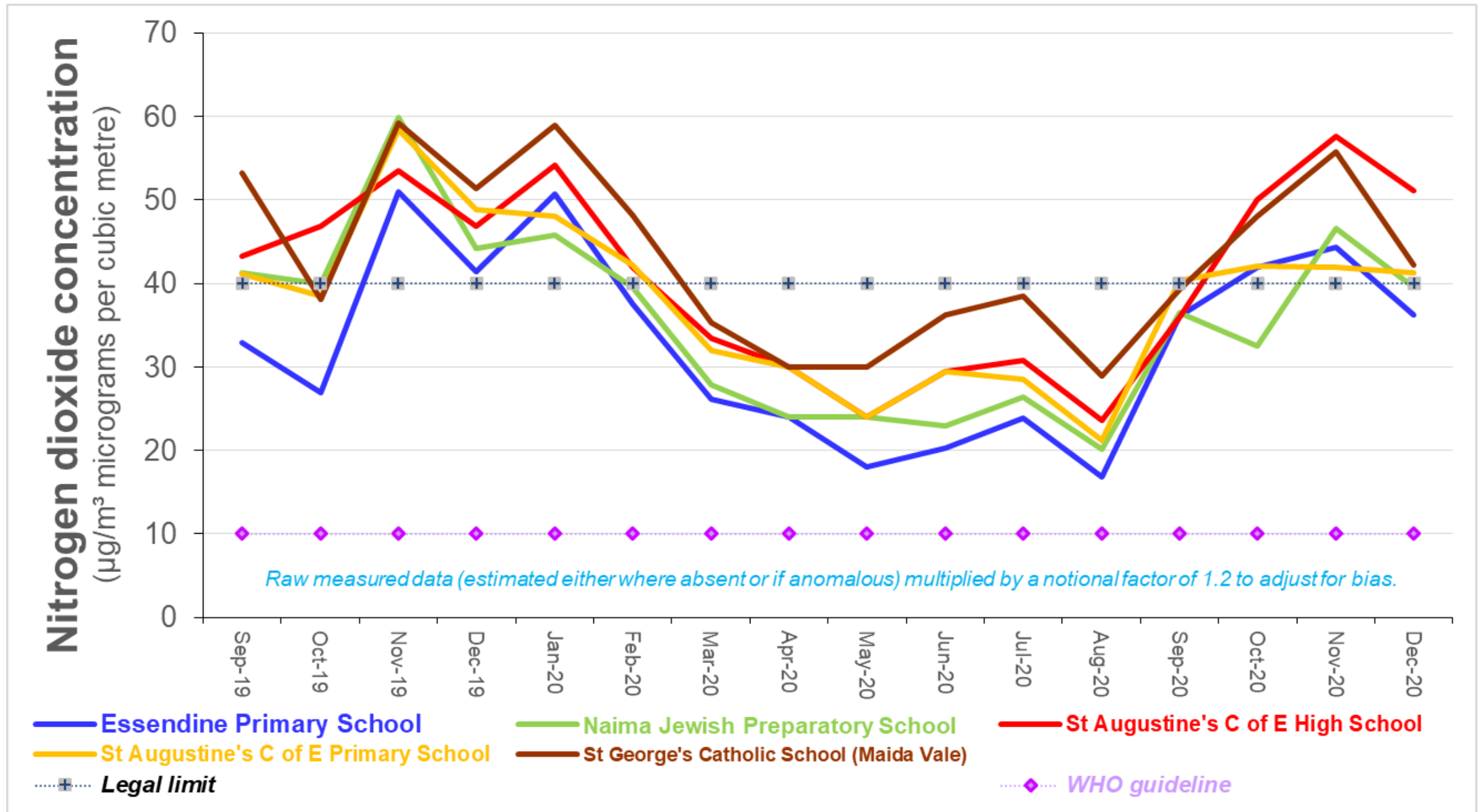
Lancaster Gate ward and Hyde Park ward



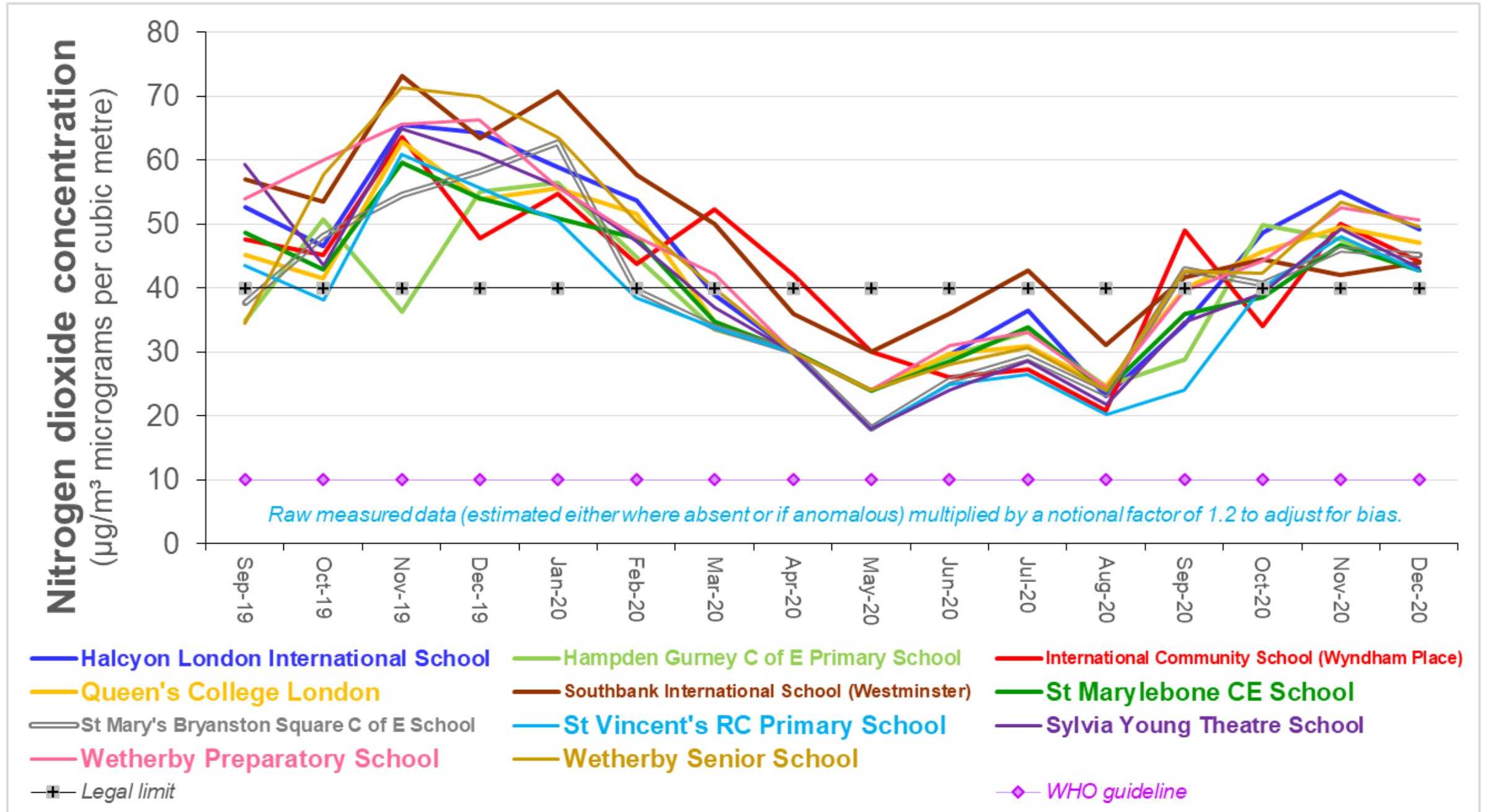
Little Venice ward



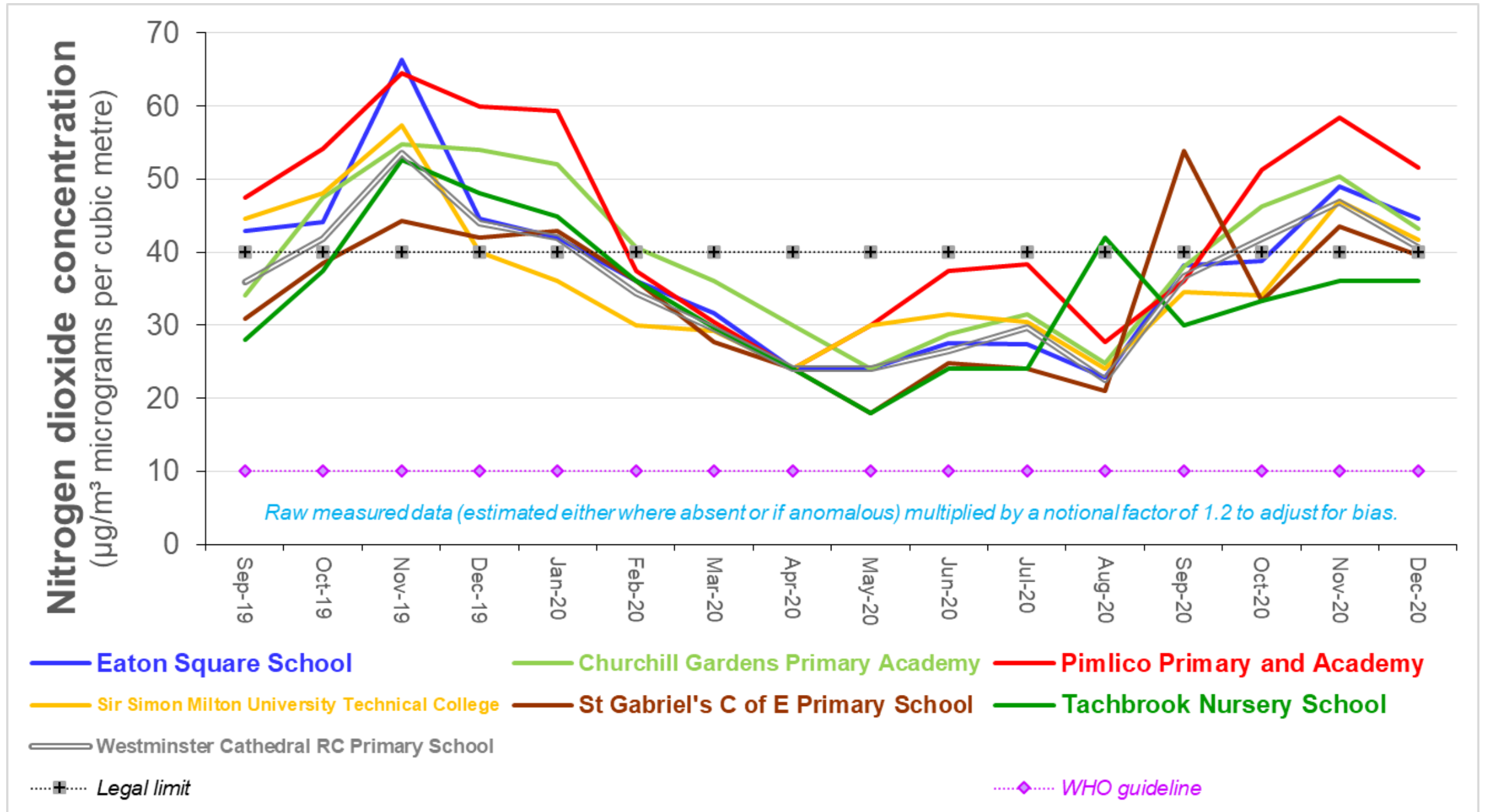
Maida Vale ward



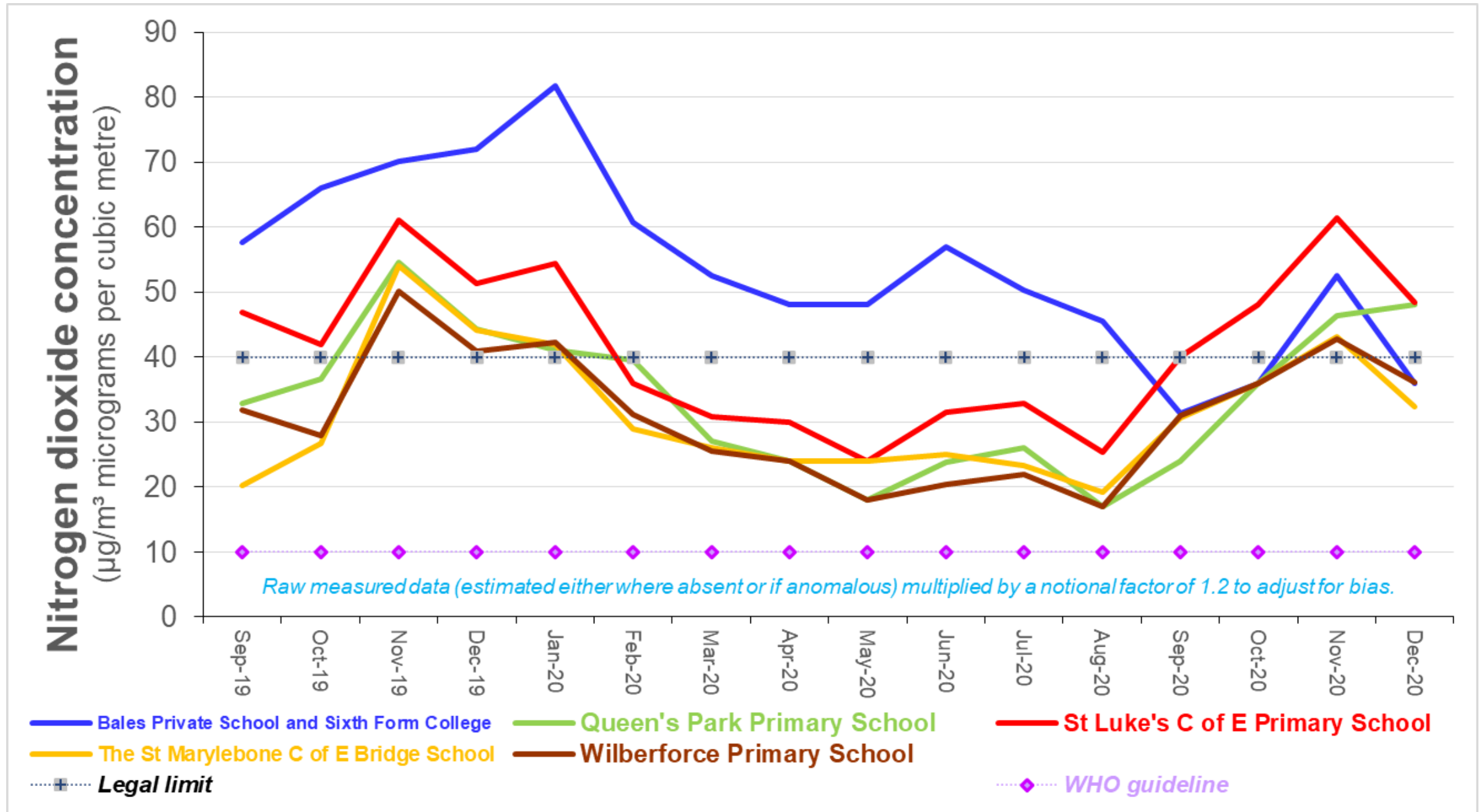
Marylebone ward



Pimlico North ward and Pimlico South ward

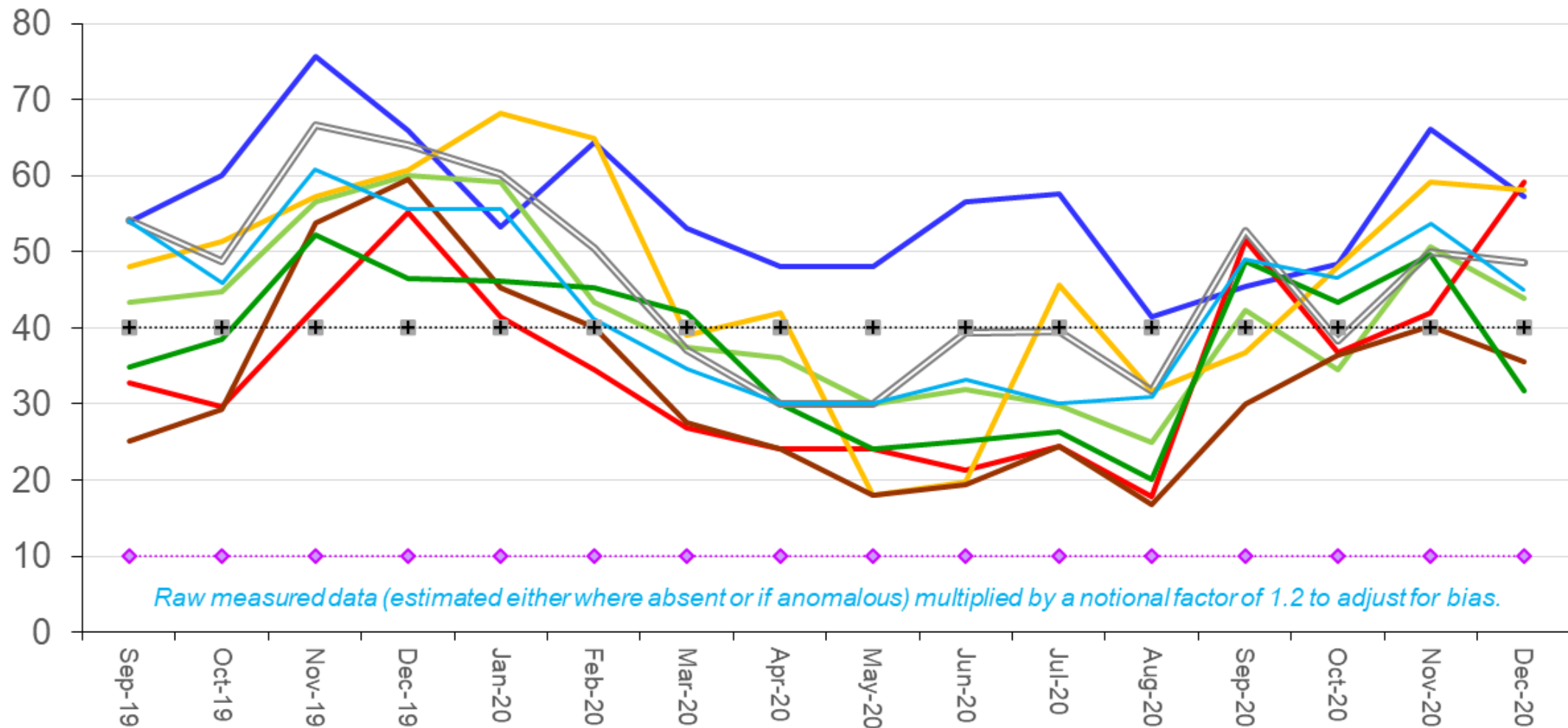


Queen's Park ward



Regent's Park ward

Nitrogen dioxide concentration
($\mu\text{g}/\text{m}^3$ micrograms per cubic metre)



Abercorn School (Pre-Prep)

Francis Holland School (Regent's Park)

St Edward's RC Primary School

Legal limit

Abingdon House School

Robinsfield Infant School

St John's Wood Pre-Preparatory School

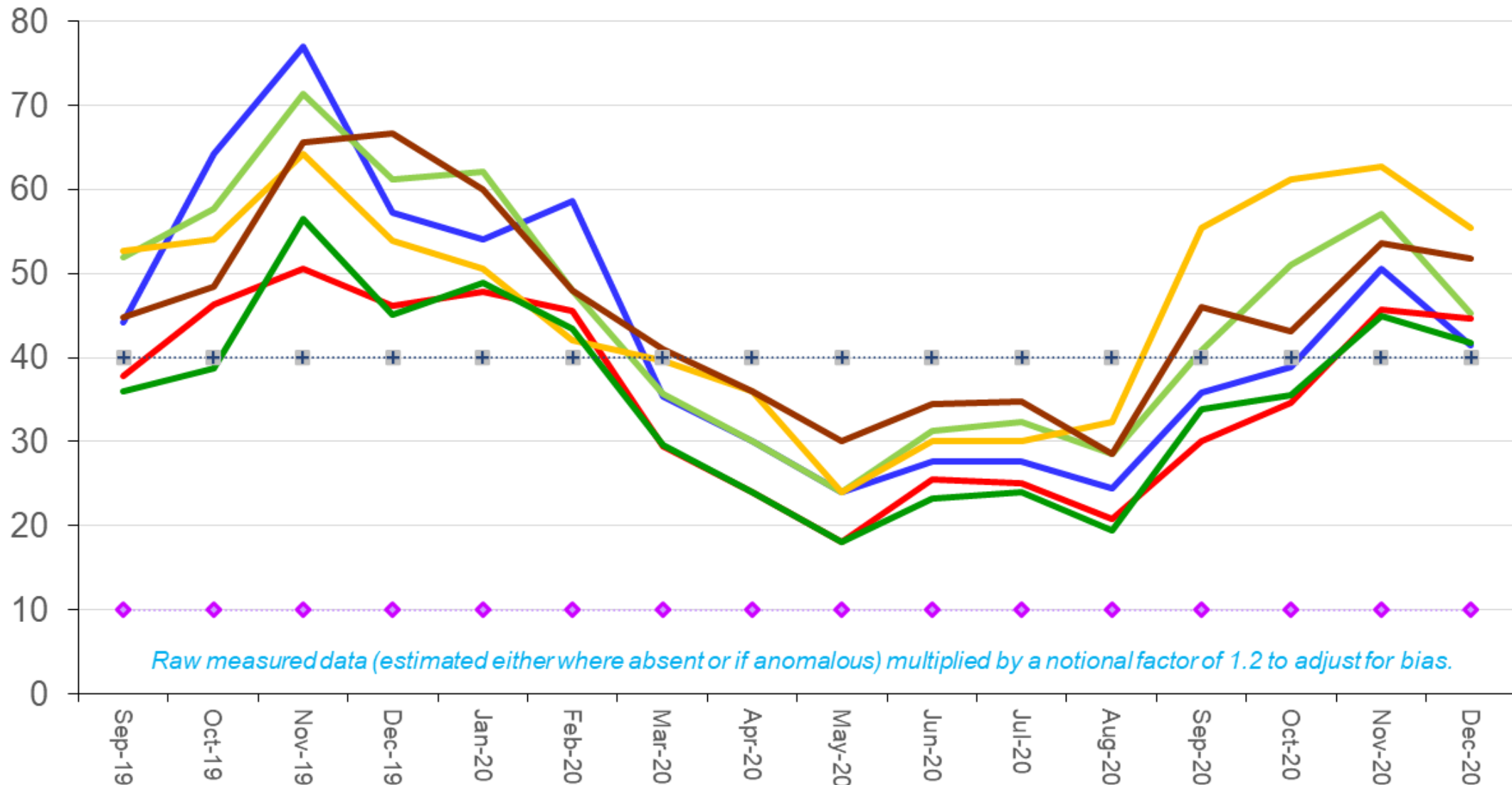
Barrow Hill Junior School

St Christina's School

WHO guideline

St James ward

Nitrogen dioxide concentration
($\mu\text{g}/\text{m}^3$ micrograms per cubic metre)



Harris Westminster Sixth Form

Westminster Abbey Choir School

Legal limit

St Clement Dane's C of E Primary School

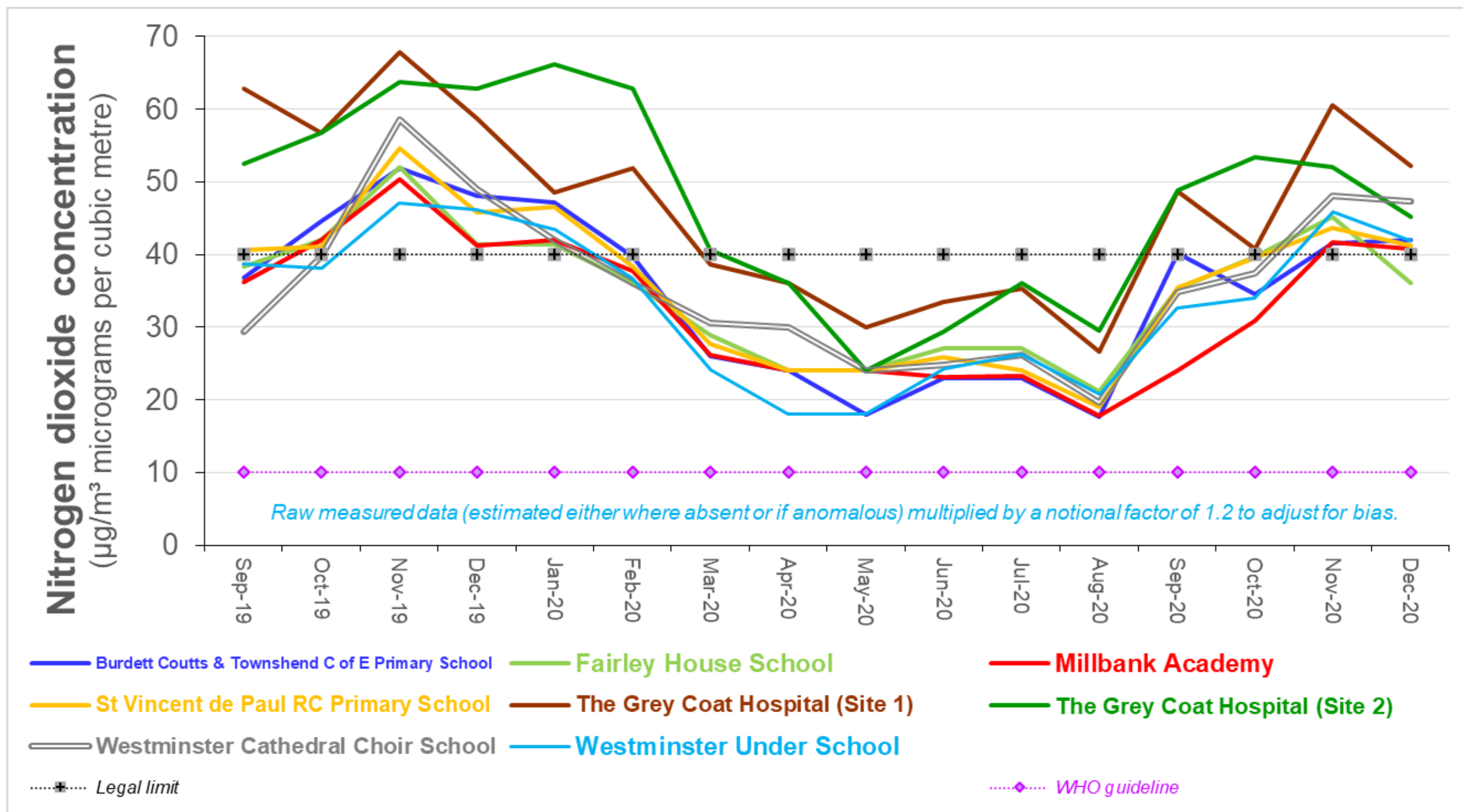
Westminster City School

St Matthew's CE Primary School

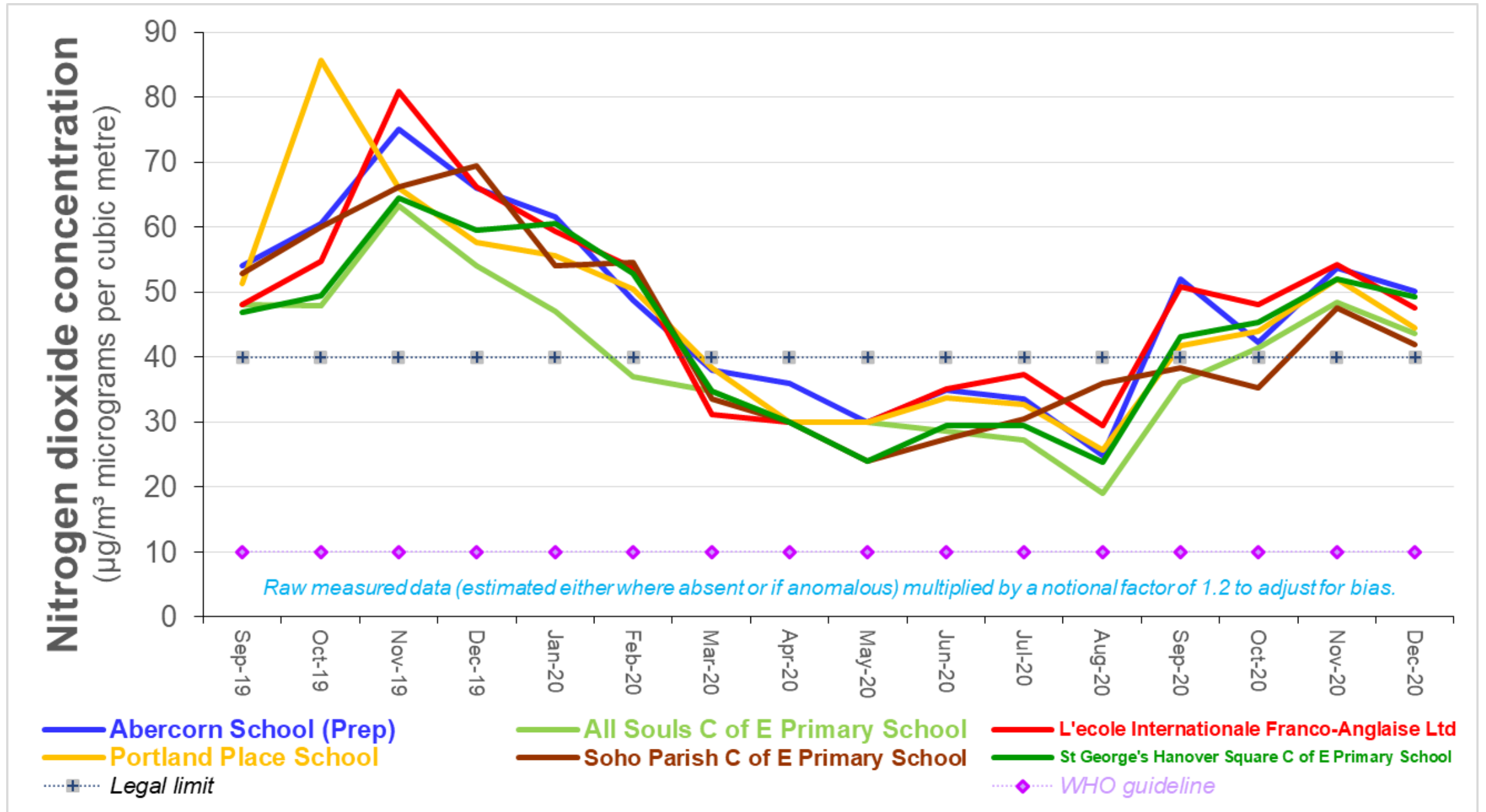
Westminster School

WHO guideline

Vincent Square ward



West End ward



Westbourne ward

